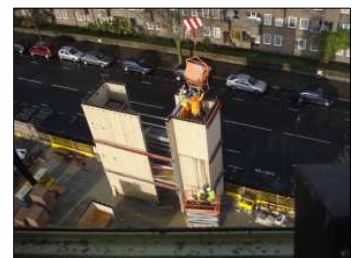


Project	<p>Elgin Avenue: Social Housing development</p> <p>15 Units plus G/F doctor surgery</p> <p>5 storeys</p> <p>45 Week overall programme – ground works plus frame</p>
Verteka Scope	<p>Stair Core</p> <p>Lift Core</p> <p>Stairs</p> <p>Design, Manufacture and Installation of core / stair flight components</p> <p>Cores 'jumped' including installation of stairs – 5 installation days</p> <p>Verteka demobilize to allow frame contractor to construct concrete frame</p>

<p>Verteka Client: Durkan Homes</p> <p>Developer: Places For People</p> <p>Consultant: Alan McEwan Assc.</p> <p>Architect: PRP</p>	<p>Site Address;</p> <p>38 Elgin Avenue</p> <p>London</p> <p>W9</p> <p>Nearest tube; Maida Vale / Westbourne Park</p>
--	---



Site Visit Information

- **Verteka scope complete (12 Dec 08)**
- **Visits to view the exposed core, stairs etc can be arranged with Verteka**
- **Visit availability: December 2008 thru end - January 2009**
- **Contact: Scott Kent 01483 232 200**